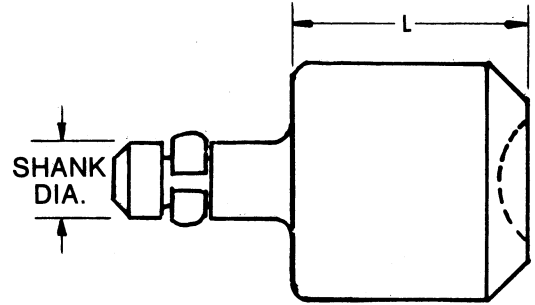
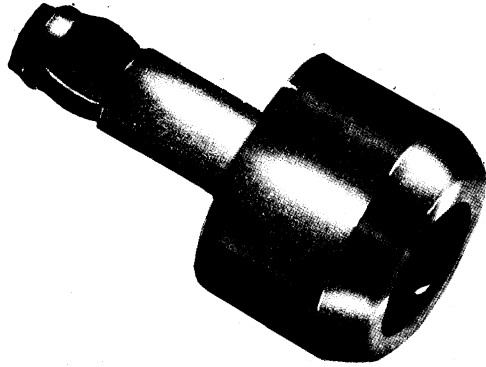


# CUPPED SQUEEZER SETS



CUPPINGS	1/16	3/32	1/8	5/32	3/16	1/4	5/16	3/8
<b>UNIVERSAL-AN 470</b>	4702	4703	4704	4705	4706	4708	47010	47012
Round-AN-430	4302	4303	4304	4305	4306	4308	43010	43012
Flat-AN-442	4422	4423	4424	4425	4426	4428	44210	44212
Brazier-AN455	4552	4553	4554	4555	4556	4558	45510	45512
Mod. Brazier-AN 456	4562	4563	4564	4565	4566	4568	45610	45612
Round-AN 435 (button)	4352	4353	4354	4355	4356	4358	43510	43512

## BRITISH STYLE CUPPING

Round/SNAP SP80*	SP802	SP803	SP804	SP805	SP806	SP808	SP8010	SP8012
MUSH SP85*	SP852	SP853	SP854	SP855	SP856	SP858	SP8510	SP8512
SP157*	SP1572	SP1573	SP1574	SP1575	SP1576	SP1578	SP15710	SP15712

\*A.S. AVAILABLE ON REQUEST

**Example:** To order L = 1/4" - 1/8" AN470 x .187 shank. **Specify:** AAT 200-4704.

### .187 SHANK

PART NO.	"L" Dim.
AAT 200	1/4"
AAT 201	3/8"
AAT 202	1/2"
AAT 203	5/8"
AAT 204	3/4"
AAT 205	1/8"

### .250 SHANK

PART NO.	"L" Dim.
SM 220	1/4"
SM 221	3/8"
SM 222	1/2"
SM 223	5/8"
SM 224	3/4"
SM 225	Specify

### .312 SHANK

PART NO.	"L" Dim.
SM 240	1/4"
SM 241	3/8"
SM 242	1/2"
SM 243	5/8"
SM 244	3/4"
SM 245	Specify

### .375 SHANK

PART NO.	"L" Dim.
SM 260	1/4"
SM 261	3/8"
SM 262	1/2"
SM 263	5/8"
SM 264	3/4"
SM 265	Specify

Quantity	
1-5	
6-24	
25-49	

Quantity	
1-5	
6-24	
25-49	

Quantity	
1-5	
6-24	
25-49	

Quantity	
1-5	
6-24	
25-49	

**NOTE: Prices Apply to All AN 470 Above Except 1/4", 5/16" and 3/8" Cupping.  
All Other Style Cuppings Add**