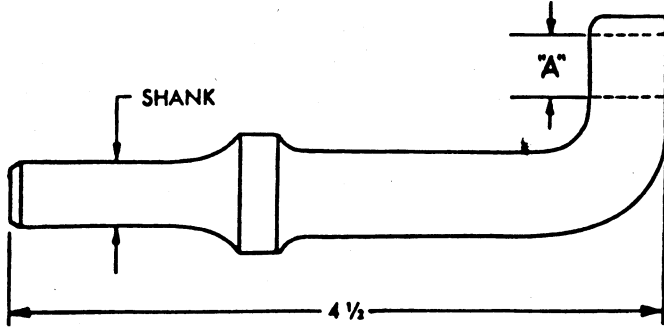


Gooseneck Insert Adapters

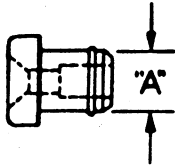
FOR HUCK LOCKBOLT AND HIGH SHEAR RIVET INSERTS



"A" Dim.	401 Shank	Price	498 Shank
.406	SMA 450		SMA 455
.531	SMA 451		SMA 456

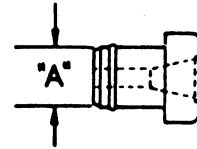
Inserts for Gooseneck Adapters

For High-Shear Rivet



Rivet	Dash No.
1/8"	-4
5/32"	-5
3/16"	-6
1/4"	-8
5/16"	-10
3/8"	-12

For Huck Lockbolt



"A" Dim.	Part No.
.406	SMHS 460
.531	SMHS 461

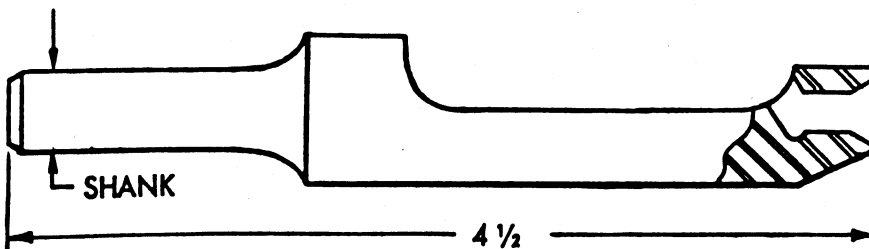
.406 Inserts available for -4, -5, -6 rivets.

.531 Inserts available for -8, -10, -12 rivets.

"A" Dim.	Part No.
.406	SMH 465
.531	SMH 466

Example: To order a .531 insert for 1/4" lockbolt. Specify: **SMH 466-8**

Notched Sets for High-Shear Rivets



"A" Dim.	Part No.	
.401	SMHS 150	
.498	SMHS 155	

Example: To Order .401 shank, notched Rivet set for 3/16 Rivet, Specify **SMHS150-6**.

Rivet	Dash No.
1/8"	-4
5/32"	-5
3/16"	-6
1/4"	-8
5/16"	-10
3/8"	-12