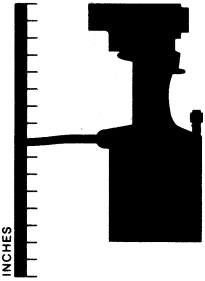


# DOUBLE ACTION BLIND BOLT FASTENERS



## Model 200

Type: Pneumatic

Applications: High speed production

Features: Lightweight, separate lock collar driving for blind rivet installation.

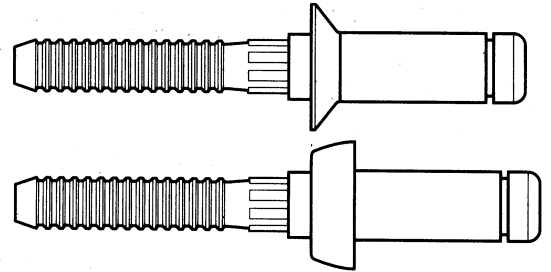
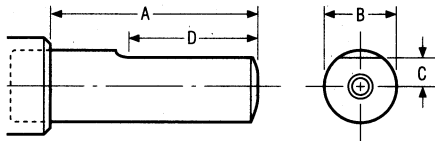
Nose Assemblies

5/32	3/16	1/4	5/16	3/8
99-600	99-589			
99-600-1	99-589-1			

Includes part numbers:

MS21141(BP-EU)	MS21140(B100-EU)
MS90354(BP-T)	MS90353(B100-T)
OBP-EU05 & 06	OB100-EU05 & 06
OBP-T05 & 06	OB100-T05 & 06
7B100-EU05 & 06	7B120-EU06
4B100-T06	4B100-EU06

The Blind Bolt fastener is designed for highly-loaded structural applications for aircraft, missiles, and other aerospace vehicles. Due to its high vibration resistance, it performs flawlessly in applications such as wing flaps and landing gear and engine inlets.



The Double Action Blind Bolt fastener, with flush and protruding heads.

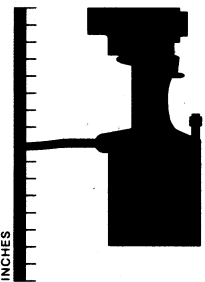
### 3/16 Diameter

Nose Assy	Fig	Flats	A	B	C	D
99-589	1	1	2.12	.88	.31	1.38
99-589-1	1	1	6.00	.94	.31	5.78

### 5/32 Diameter

Nose Assy	Fig	Flats	A	B	C	D
99-600	1	1	2.12	.88	.31	1.38
99-600-1	1	1	6.00	.88	.31	5.78

# ALUMINUM DOUBLE ACTION BLIND RIVET FASTENERS



## Model 200

Type: Pneumatic

Applications: High speed production

Features: Lightweight, separate lock collar driving for blind rivet installation.

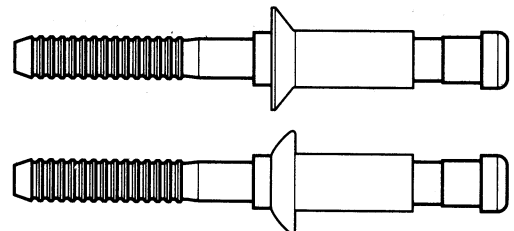
Nose Assemblies

1/8	5/32	3/16	1/4	5/16
78972 <sup>1</sup>	78973 <sup>1</sup>	78974 <sup>1</sup>	99-740	
78978 <sup>1</sup>	78979 <sup>1</sup>	78980 <sup>1</sup>		
99-1013	99-458	99-459		

Includes part numbers:

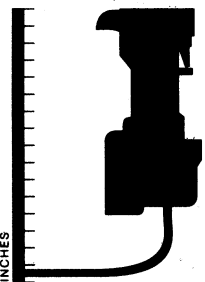
NAS 1919B	MLSP( )
NAS 1921B	MLS100( )

The unique controlled installation action of these blind rivets forms a wide-bearing head that assures integrity on thin sheet blind side applications. They can be used with confidence in FOD critical areas because of their positive mechanical lock feature. Aluminum Double Action Blind Rivets are acceptable in Kevlar and fiberglass applications. These fasteners are installed with shifting double action tools.



The Double Action Blind Rivet fastener in flush and protruding head styles.

<sup>1</sup> Requires adapter part number 104406. Shipped with Model 200



## Model 350

Type: Pneumatic

Applications: High speed production

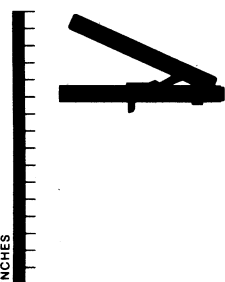
Features: Narrow centerline-to-edge measurement allows installations in limited clearance applications.

Nose Assemblies

1/8	5/32	3/16	1/4	5/16
78972	78973	78974		

NOTE: Longest grips that can be installed with Model 350 Installation Tool are:

MLSP-B4-6	MLSP-B5-7	MLSP-B6-7
MLS100-B4-6	MLS100-B5-8	MLS100-B6-8



## Model 136

Type: Manual

Applications: Ideal when air and hydraulic power are unavailable

Features: Lightweight manual tool featuring optimum stroke.

Nose Assemblies

1/8	5/32	3/16	1/4	5/16
99-560	99-561	99-562		